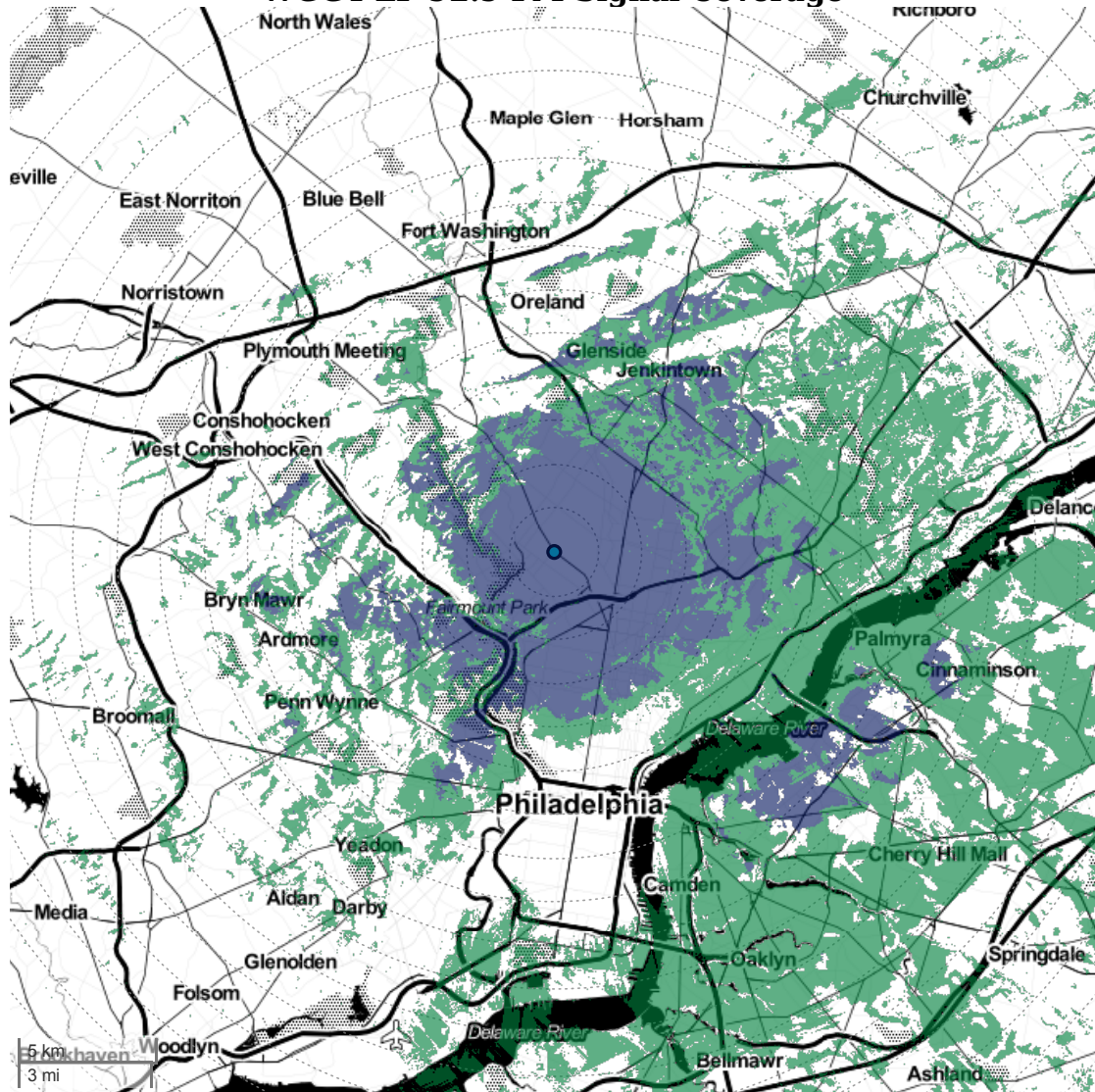


WGGT-LP 92.9 FM Signal Coverage



Prometheus Radio Project | Map tiles by [Stamen Design](#), under [CC BY 3.0](#). Data by [OpenStreetMap](#), under [ODbL](#).

	Strong Signal	Fair Signal	Unlikely Signal
Population	549,165	932,983	1,481,713
Hispanic	90,045	121,456	82,153
White	139,692	537,645	1,018,572
Black	318,059	256,671	295,322
Am. Indian	2,806	3,825	3,204
Asian	25,718	49,290	97,909
Hawaiian/Pacific	250	421	553
Other Race	46,211	59,758	33,802
Multiple Race	16,429	25,373	32,351
Female	296,665	485,946	770,655
Male	252,500	447,037	711,058
Incarcerated	5,886	6,176	7,185

Longley-Rice signal coverage prediction for **WGGT-LP** 92.9 MHz (225), 15W@77m (59m AGL) 40 2 7.4 N, 75 10 29.64 W (NAD83) considering potential interference from: **WXTU** 92.5 MHz (223), 15kW@279m dist 5km; **WEMK-LP** 92.9 MHz (225), 27W@41.1m dist 25km; **WZML-LP** 92.9 MHz (225), 5W@138m dist 27km; **WMGS** 92.9 MHz (225), 5300W@422m dist 140km; **WMMR** 93.3 MHz (227), 16.5kW@264m dist 9km; **W225CH** 92.9 MHz (225), 145W@27.8m dist 45km; **WPAT-FM** 93.1 MHz (226), 5400W@433m dist 124km; **WOBM-FM** 92.7 MHz (224), 1480W@148m dist 88km. FCC radio station data as of 2016-09-13 03:46:00. Circles at 1-mile intervals.

Signal Coverage Map and Demographics Information

These maps and associated population statistics are produced by the **Prometheus Radio Project** (prometheusradio.org), partly funded by a **Knight Foundation** prototype grant.

The ability for an FM radio to clearly receive a signal depends on the type of radio (car radios are usually excellent), its location (basements are more difficult -- outdoors and higher is better), the type of building construction if indoors, and the type and location of antenna it uses. Weather, time of day, and seasonal ground-moisture variation also affect how much signal is lost before it gets to the radio receiver. Signal strength or coverage prediction therefore produces a **statistical** estimate for **average** conditions, and will not exactly match people's experience.

Key factors in radio reception are the height and type of the transmission antenna, how much power it is radiating, and the terrain between the transmitting antenna and the receiving radio. The **Longley-Rice** model accounts for these factors, and also approximates the effect of forest and buildings, both in consideration of the *desired* signal, and the signals from *other radio stations* which may cause interference. Longley-Rice prediction is the current, conservative industry standard.

Strong Signal: Nearly every radio will easily receive a clear signal. Meets FCC minimum signal strength (60 dB μ V/m) and interference protection requirements: -20 dB co-channel, -6 dB first adjacent, +40 dB second/third adjacent (47CFR§73.215, §73.509, §74.1204).

Fair Signal: Many radios, especially car radios, will receive the signal easily, and anyone who makes an effort will be able to receive the signal. There may be some slight interference. Signal strength is 40 dB μ V/m through 60 dB μ V/m with 8 dB less interference protection than Strong Signal.

Unlikely Signal: The signal may have unlistenable levels of interference, or be too weak to be received, however some radios may sometimes receive it at some locations.

Longley-Rice Parameters: Point-to-point, radial point spacing 30m (FCC 84-341 interpolation), climate 5, conductivity 0.005, permittivity 15, refractivity 301, clutter attenuation forest -3dB, residential -5dB, urban/buildings/commercial/industrial -6dB

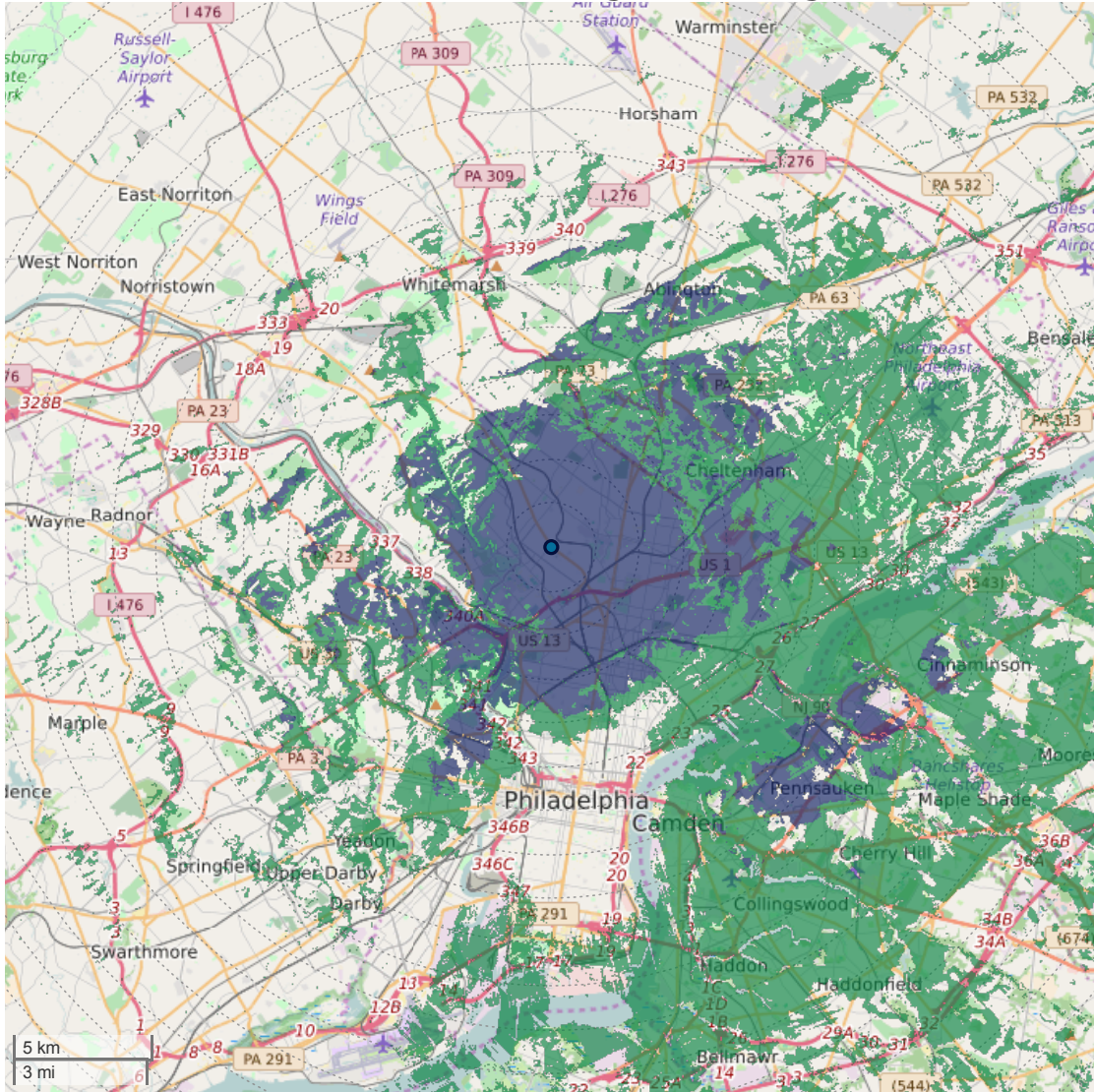
Terrain Data: U.S. Geological Survey seamless 1-second NED

Demographics: U.S. Census Bureau 2010 "SF1" census blocks, centroid method

Radio Station Data: Federal Communications Commission CDBS database

101724598 225 143480,-271475,144775,-269784 800 101121438,101624734,101737062,100284822,101163686,101728856,100039605,101733915 2016-09-13 03:46:00

WGGT-LP 92.9 FM Signal Coverage



[Prometheus Radio Project](#) | Map data © [OpenStreetMap](#) contributors

	Strong Signal	Fair Signal	Unlikely Signal
Population	549,165	932,983	1,481,713
Hispanic	90,045	121,456	82,153
White	139,692	537,645	1,018,572
Black	318,059	256,671	295,322
Am. Indian	2,806	3,825	3,204
Asian	25,718	49,290	97,909
Hawaiian/Pacific	250	421	553
Other Race	46,211	59,758	33,802
Multiple Race	16,429	25,373	32,351
Female	296,665	485,946	770,655
Male	252,500	447,037	711,058
Incarcerated	5,886	6,176	7,185

Longley-Rice signal coverage prediction for **WGGT-LP** 92.9 MHz (225), 15W@77m (59m AGL) 40 2 7.4 N, 75 10 29.64 W (NAD83) considering potential interference from: **WXTU** 92.5 MHz (223), 15kW@279m dist 5km; **WEMK-LP** 92.9 MHz (225), 27W@41.1m dist 25km; **WZML-LP** 92.9 MHz (225), 5W@138m dist 27km; **WMGS** 92.9 MHz (225), 5300W@422m dist 140km; **WMMR** 93.3 MHz (227), 16.5kW@264m dist 9km; **W225CH** 92.9 MHz (225), 145W@27.8m dist 45km; **WPAT-FM** 93.1 MHz (226), 5400W@433m dist 124km; **WOBM-FM** 92.7 MHz (224), 1480W@148m dist 88km. FCC radio station data as of 2016-09-13 03:46:00. Circles at 1-mile intervals.

Signal Coverage Map and Demographics Information

These maps and associated population statistics are produced by the **Prometheus Radio Project** (prometheusradio.org), partly funded by a **Knight Foundation** prototype grant.

The ability for an FM radio to clearly receive a signal depends on the type of radio (car radios are usually excellent), its location (basements are more difficult -- outdoors and higher is better), the type of building construction if indoors, and the type and location of antenna it uses. Weather, time of day, and seasonal ground-moisture variation also affect how much signal is lost before it gets to the radio receiver. Signal strength or coverage prediction therefore produces a **statistical** estimate for **average** conditions, and will not exactly match people's experience.

Key factors in radio reception are the height and type of the transmission antenna, how much power it is radiating, and the terrain between the transmitting antenna and the receiving radio. The **Longley-Rice** model accounts for these factors, and also approximates the effect of forest and buildings, both in consideration of the *desired* signal, and the signals from *other radio stations* which may cause interference. Longley-Rice prediction is the current, conservative industry standard.

Strong Signal: Nearly every radio will easily receive a clear signal. Meets FCC minimum signal strength (60 dB μ V/m) and interference protection requirements: -20 dB co-channel, -6 dB first adjacent, +40 dB second/third adjacent (47CFR§73.215, §73.509, §74.1204).

Fair Signal: Many radios, especially car radios, will receive the signal easily, and anyone who makes an effort will be able to receive the signal. There may be some slight interference. Signal strength is 40 dB μ V/m through 60 dB μ V/m with 8 dB less interference protection than Strong Signal.

Unlikely Signal: The signal may have unlistenable levels of interference, or be too weak to be received, however some radios may sometimes receive it at some locations.

Longley-Rice Parameters: Point-to-point, radial point spacing 30m (FCC 84-341 interpolation), climate 5, conductivity 0.005, permittivity 15, refractivity 301, clutter attenuation forest -3dB, residential -5dB, urban/buildings/commercial/industrial -6dB

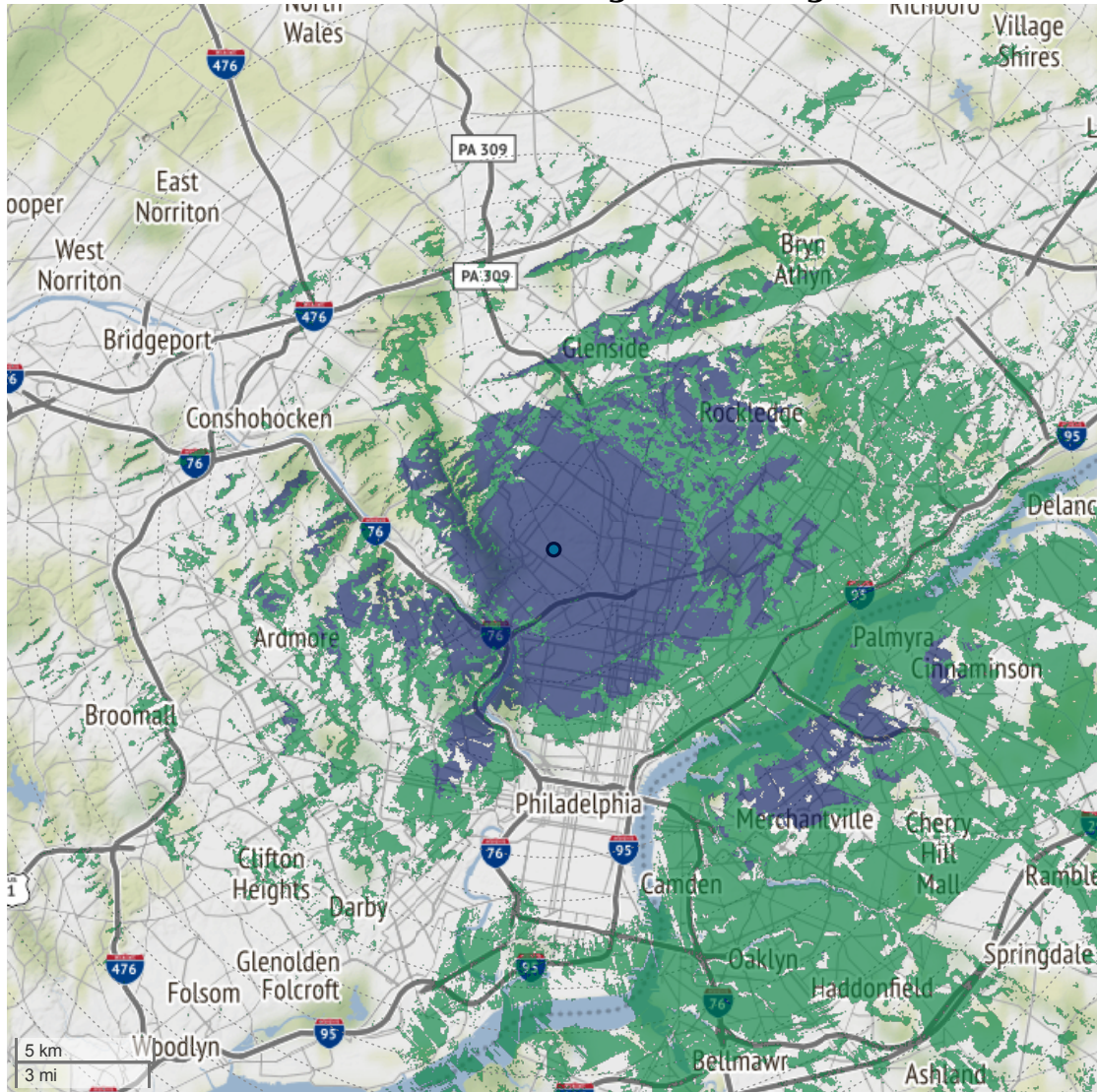
Terrain Data: U.S. Geological Survey seamless 1-second NED

Demographics: U.S. Census Bureau 2010 "SF1" census blocks, centroid method

Radio Station Data: Federal Communications Commission CDBS database

101724598 225 143480,-271475,144775,-269784 800 101121438,101624734,101737062,100284822,101163686,101728856,100039605,101733915 2016-09-13 03:46:00

WGGT-LP 92.9 FM Signal Coverage



[Prometheus Radio Project](#) | Map tiles by [Stamen Design](#), under [CC BY 3.0](#). Data by [OpenStreetMap](#), under [ODbL](#).

	Strong Signal	Fair Signal	Unlikely Signal
Population	549,165	932,983	1,481,713
Hispanic	90,045	121,456	82,153
White	139,692	537,645	1,018,572
Black	318,059	256,671	295,322
Am. Indian	2,806	3,825	3,204
Asian	25,718	49,290	97,909
Hawaiian/Pacific	250	421	553
Other Race	46,211	59,758	33,802
Multiple Race	16,429	25,373	32,351
Female	296,665	485,946	770,655
Male	252,500	447,037	711,058
Incarcerated	5,886	6,176	7,185

Longley-Rice signal coverage prediction for **WGGT-LP** 92.9 MHz (225), 15W@77m (59m AGL) 40 2 7.4 N, 75 10 29.64 W (NAD83) considering potential interference from: **WXTU** 92.5 MHz (223), 15kW@279m dist 5km; **WEMK-LP** 92.9 MHz (225), 27W@41.1m dist 25km; **WZML-LP** 92.9 MHz (225), 5W@138m dist 27km; **WMGS** 92.9 MHz (225), 5300W@422m dist 140km; **WMMR** 93.3 MHz (227), 16.5kW@264m dist 9km; **W225CH** 92.9 MHz (225), 145W@27.8m dist 45km; **WPAT-FM** 93.1 MHz (226), 5400W@433m dist 124km; **WOBM-FM** 92.7 MHz (224), 1480W@148m dist 88km. FCC radio station data as of 2016-09-13 03:46:00. Circles at 1-mile intervals.

Signal Coverage Map and Demographics Information

These maps and associated population statistics are produced by the **Prometheus Radio Project** (prometheusradio.org), partly funded by a **Knight Foundation** prototype grant.

The ability for an FM radio to clearly receive a signal depends on the type of radio (car radios are usually excellent), its location (basements are more difficult -- outdoors and higher is better), the type of building construction if indoors, and the type and location of antenna it uses. Weather, time of day, and seasonal ground-moisture variation also affect how much signal is lost before it gets to the radio receiver. Signal strength or coverage prediction therefore produces a **statistical** estimate for **average** conditions, and will not exactly match people's experience.

Key factors in radio reception are the height and type of the transmission antenna, how much power it is radiating, and the terrain between the transmitting antenna and the receiving radio. The **Longley-Rice** model accounts for these factors, and also approximates the effect of forest and buildings, both in consideration of the *desired* signal, and the signals from *other radio stations* which may cause interference. Longley-Rice prediction is the current, conservative industry standard.

Strong Signal: Nearly every radio will easily receive a clear signal. Meets FCC minimum signal strength (60 dB μ V/m) and interference protection requirements: -20 dB co-channel, -6 dB first adjacent, +40 dB second/third adjacent (47CFR§73.215, §73.509, §74.1204).

Fair Signal: Many radios, especially car radios, will receive the signal easily, and anyone who makes an effort will be able to receive the signal. There may be some slight interference. Signal strength is 40 dB μ V/m through 60 dB μ V/m with 8 dB less interference protection than Strong Signal.

Unlikely Signal: The signal may have unlistenable levels of interference, or be too weak to be received, however some radios may sometimes receive it at some locations.

Longley-Rice Parameters: Point-to-point, radial point spacing 30m (FCC 84-341 interpolation), climate 5, conductivity 0.005, permittivity 15, refractivity 301, clutter attenuation forest -3dB, residential -5dB, urban/buildings/commercial/industrial -6dB

Terrain Data: U.S. Geological Survey seamless 1-second NED

Demographics: U.S. Census Bureau 2010 "SF1" census blocks, centroid method

Radio Station Data: Federal Communications Commission CDBS database

101724598 225 143480,-271475,144775,-269784 800 101121438,101624734,101737062,100284822,101163686,101728856,100039605,101733915 2016-09-13 03:46:00